



mod. CPR-M3

single jet - wet dial



ITA mod. CPR-M3

Getto singolo, quadrante bagnato, lettura diretta. Dotato di anello anti-frode con coperchio orientabile a 360°. Realizzato nelle versioni per acqua fredda (30°C) e acqua calda (90°C) nei calibri \varnothing 15 e 20 mm (1/2"-3/4"). Garanzia di lunga durata.

ENG mod. CPR-M3

Single jet, wet dial, direct reading with anti-fraud ring with 360° rotating lid. Produced in the versions for cold water (30°C) and hot water (90°C) in the diameters 15 and 20 mm (1/2"- 3/4"). Long durability guaranteed.

ES mod. CPR-M3

Chorro único, esfera húmeda, lectura directa. Equipado de anillo antifraude con tapa orientable a 360°. Producido en las versiones para agua fría (30°C) y caliente (90°C) en los calibres \varnothing 15 y 20 mm (1/2"- 3/4"). Garantía de larga duración.

DEU mod. CPR-M3

Einzelwasserstrahl, nasses Zifferblatt, Direktablesung. Ausgestattet mit anti-Betrug Ring mit richtbarem Deckel 360°. Produziert in den Versionen Kaltwasser (30°C) Warmwasser (90°C) in den Durchmesser 15 und 20 mm (1/2 Zoll- 3/4 Zoll). Garantiert lange Haltbarkeit.

FRA mod. CPR-M3

Jet unique, cadran noyé à lecture directe. Equipé d'une bague d'invioabilité avec couvercle orientable à 360°. Disponible en la version pour eau froide (30°C) ou eau chaude (90°C) en 2 calibres 15 ou 20 mm (1/2" ou 3/4"), fiabilité dans le temps.

RUS мод. CPR-M3

Одноструйный счетчик с мокрым квадрантом и прямым считыванием, антимагнитным кольцом и вращающейся на 360° крышкой. Выпускается в версиях для холодной (30°C) и горячей (90°C) воды диаметрами условного прохода 15 и 20мм (1/2" – 3/4"). Гарантия долговечности.

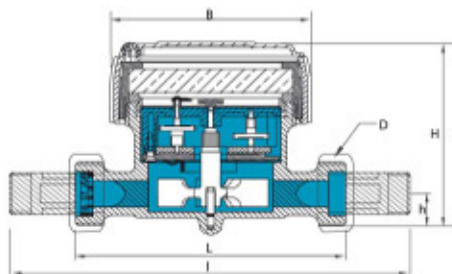
Technical features

| Size | DN | mm in | 15 (1/2") | 20 (3/4") |
|-----------------------------|----------------|-------------------|-----------|-----------|
| Overload flow rate | Q ₄ | m ³ /h | 3.12 | 5 |
| | Q ₃ | m ³ /h | 2,5 | 4 |
| Permanent flow rate | Q ₂ | l/h | 40 | 64 |
| | Q ₁ | l/h | 25 | 40 |
| R = 100H | Q ₂ | l/h | 25 | 40 |
| | Q ₁ | l/h | 15,63 | 25 |
| R = 160H | Q ₂ | l/h | 25 | 40 |
| | Q ₁ | l/h | 15,63 | 25 |
| Min reading | | l | 0,05 | |
| Max reading | | m ³ | 99.999 | |
| Max admissible pressure MAP | | bar | 16 | |

Installation position

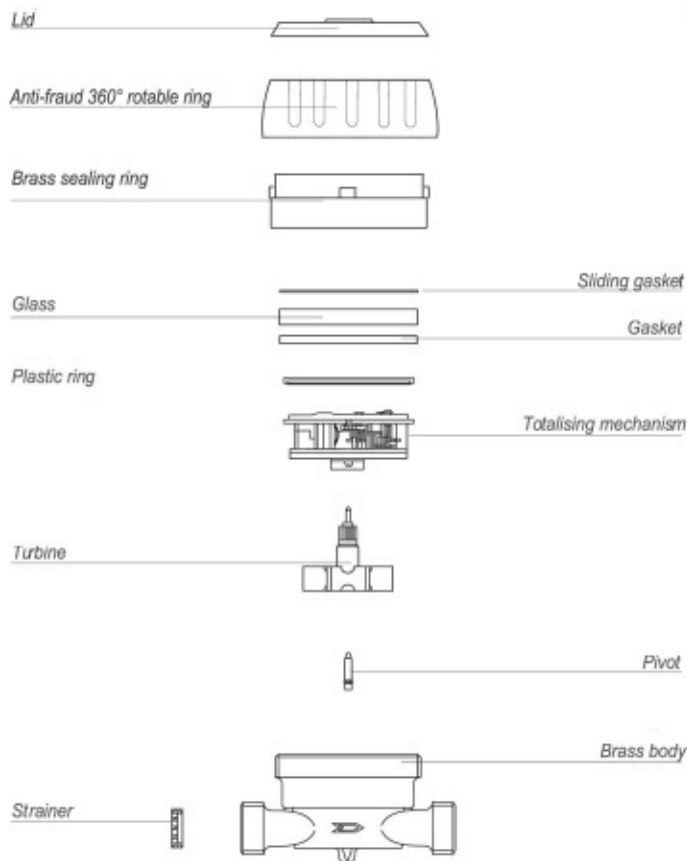


Dimensions and Weights



| Calibro Size | mm in | 15 (1/2") | 20 (3/4") | |
|--------------|----------------|-----------|-----------|------|
| L | mm | 110 | 130 | |
| l | mm | 190 | 228 | |
| H | mm | 80 | 80 | |
| h | mm | 18 | 18 | |
| B | mm | 80 | 80 | |
| D Threading | in | 3/4" | 1" | |
| Weight | with unions | kg | 0,76 | 0,93 |
| | without unions | kg | 0,62 | 0,69 |

Threading EN ISO 228-1:2000



Basic version

- » MID R100-H/V 2004/22/CE
- » Available for cold water 0°C-50°C and for hot water 30°C-90°C
- » Mechanical transmission
- » Direct reading on 5 numeric rolls
- » Wet dial
- » 360° rotating lid

Upon request

- » Version MID R160-H/R100-V

Typical Head Loss Curve



EN14154

Water meter model:

CPR-M3

