



## mod. GSD8 single jet -super dry



Available version  
for hot water 30-90°C

### ITA mod. GSD8

Getto singolo, quadrante asciutto, lettura diretta su 8 rulli numeratori. Realizzato nelle versioni per acqua fredda (30°C) e calda (90°C) nei calibri  $\varnothing$  15 e 20 mm (1/2" e 3/4"). Quadrante orientabile a 360°. Esclusi rischi di corrosione e sedimentazione. Garanzia di lunga durata ed elevata precisione.

### ENG mod. GSD8

Single jet, dry dial, direct reading on 8 numerical rolls. Produced in the versions for cold water (30°C) and hot water (90°C) in the diameters 15 and 20 mm (1/2" - 3/4"). 360° rotating dial. Risks of corrosion and sedimentation are excluded. Long durability and elevated precision guaranteed.

### ES mod. GSD8

Chorro único, esfera seca, lectura directa sobre 8 rodillos numerados. Construido en las versiones para agua fría (30°C) y caliente (90°C) en los calibres  $\varnothing$  15 y 20 mm (1/2" y 3/4"). Cuadro orientable a 360°. Excluidos los riesgos de corrosión y sedimentación. Garantía de larga duración y elevada precisión.

### DEU mod. GSD8

Einzelwasserstrahl, trockenenes Zifferblatt, Direktablesung auf 8 Zahlrollen. Produziert in den Versionen Kaltwasser (30°C) und Warmwasser (90°C) in den Durchmessern 15 und 20 mm (1/2 Zoll- 3/4 Zoll). Um 360 Grad schwenkbares Zifferblatt. Die Risiken von Rost und Ablagerungen sind ausgeschlossen. Garantiert lange Haltbarkeit und erhöhte Genauigkeit.

### FRA mod. GSD8

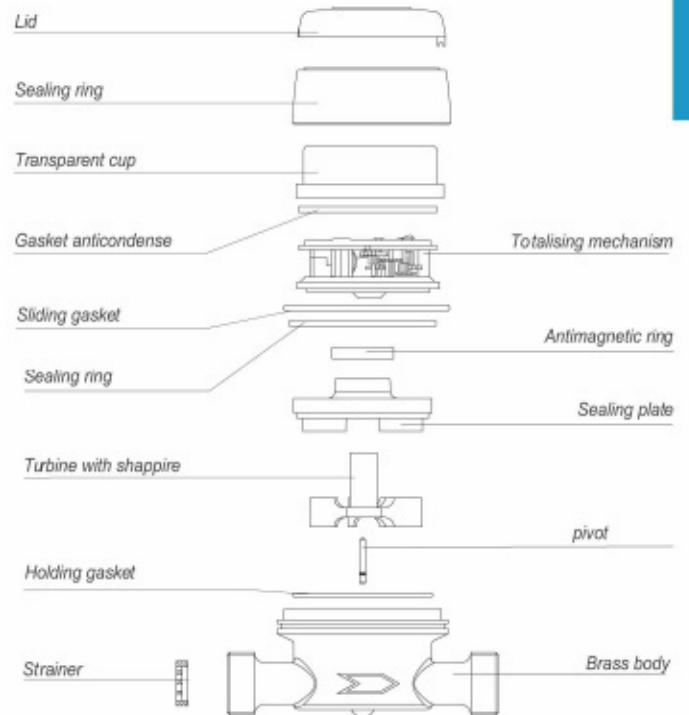
Jet unique, cadran sec à lecture directe sur 8 rouleaux numériques, disponible en la version pour eau froide (30°C) ou eau chaude (90°C) et en 2 calibres 15 ou 20 mm (1/2" ou 3/4"), cadran orientable à 360°, exclus tous problèmes de corrosion et d'incrustation, fiabilité dans le temps et précision élevée.

### RUS мод. GSD8

Одноструйный счетчик с сухим квадрантом и прямым считыванием с 8 цифровых роликов. Выпускается в версиях для холодной (30°C) и горячей (90°C) воды диаметрами 15 и 20 мм (1/2" - 3/4"). Вращающийся на 360° циферблат. Исключены риски коррозии и образования осадка. Гарантия долговечности и высокой точности.

### Technical features

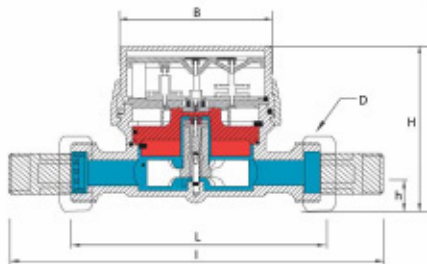
Size	DN	mm in	15 (1/2")	20 (3/4")
Overload flow rate	Q <sub>4</sub>	m <sup>3</sup> /h	3,12	5
	Q <sub>3</sub>	m <sup>3</sup> /h	2,5	4
R = 100H	Transitional flow rate	l/h	40	64
	Portata minima Min flow rate	l/h	25	40
R = 160H	Transitional flow rate	l/h	25	40
	Min flow rate	l/h	15,63	25
Min reading		l	0,05	
Max reading		m <sup>3</sup>	99.999	
Max admissible pressure MAP		bar	16	



### Installation position



### Dimensions and Weights



Size	mm in	15 (1/2")	15 (1/2")	15 (1/2")	20 (3/4")	
L	mm	80	110	115	130	
l	mm	160	190	195	228	
H	mm	73	73	73	73	
h	mm	18	18	18	18	
B	mm	85	85	85	85	
D Threading	mm	3/4"	3/4"	7/8"-3/4"	1"	
Weight	with unions	kg	0,60	0,65	0,70	0,85
	without unions	kg	0,45	0,50	0,55	0,60

Threading EN ISO 228-1:2000

### Basic version

- » MID R100-H 50-V 2004/22/CE
- » Available for cold water 0°C-50° C and for hot water 30°C-90°C
- » Magnetic transmission
- » Direct reading on 8 numeric rolls
- » Dry dial
- » 360° rotating dial

### Upon request

- » MID R160-H/R50-V
- » Prearranged for pulse emitter device mounting,
- » Equipped with pulse emitter device
- » Anti-condensation dial
- » Anti-magnetic fraud protection
- » Lid

# Typical Head Loss Curve



EN14154

**Water meter model:**

**GSD GSD-R GSD-RFM GSD-45 GSD-RF**

