

WATER METERS WITH IMPULSE EMITTER DEVICE

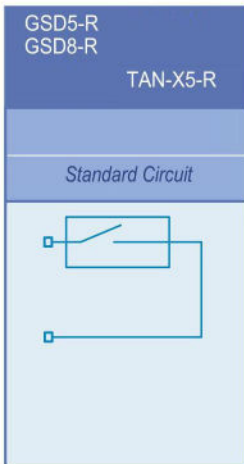
USAGE

The water meters equipped with pulse emitter device can be linked to tele-reading systems, to PLC, to M-Bus networks (through PADPULSE signal converters), to impulse counters and to all those applications that need an electronic input which indicates the water consumption.

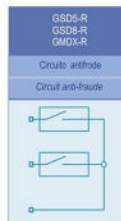
Water meters can be provided in two versions: complete version for pulse output, or pre-equipped version for pulse output. (On the pre-equipped version could be installed the pulse emitter device later on.)

ADVANTAGES

- REED contacts are contained in a very resistant box in order to avoid false signals caused by humidity or other external factors.
- High attraction strength among REED contacts is very high. For this reason the possibility of false signals or multiple signals is reduced to minimum.
- The reed contacts commutation time is a few milliseconds; this fact allows to the pulse emitter device to be used for high flowrates also.



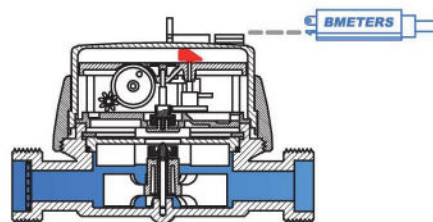
Reed characteristics	
Max Voltage	24V
Min Voltage	0,02V
Max Interrupted Current	0,5A
Max Bearable Current	1,2A
Max Power	10W/VA
Cable lenght	3 m



ANTI-TAMPERING DEVICE (if required)

The major number of tampering attempts on pulse emitter devices is made using external magnets with the aim of modifying the correct pulse emitters working. Our pulse emitters can be equipped by a further REED contact, which produces an alarm signal when the external magnet is approaching the water meter.

mod. **GSD5-R**
single jet - dry dial



Single jet, dry dial, direct reading, dial can rotate 360°, choice of impulse value

Mod. Item		GSD5-R	
version		hot water cold water	hot water cold water
Size	DN	15	20
Nominal flow rate	m ³ /h	1,5	2,5
Lenght	mm	110	130
Impulse value	liters	1 or 10 (100 on special request)	



LVI-koodit / Product codes

	DN15		DN20	
	1 ltr	10 ltr	1 ltr	10 ltr
Impulssi				
Kylmä / cold	4418 030	4418 031	4418 040	4418 041
Lämmin / hot	4438 030	4438 031	4438 040	4438 041
Liitt. / conn.	4481 216		4481 206	